

Buzzin' Around

KIM SCHAEFER



Buzzin' Around Quilt
designed by

Kim Schaefer

Quilt Size: **62" x 62"**

andoverfabrics.com

About Buzzin' Around

Whimsical butterflies intermingle with cute ladybugs and beetles in this adorable new collection by Kim Schaefer. This collection is filled with sweet little critters! Chock full of terrific coordinating prints in beautiful colors, this collection calls to mind a summer picnic on a perfect day in June.

andover

•
•
• makower.uk
•

Free Pattern Download Available

1384 Broadway New York, NY 10018
Tel. (800) 223-5678 • andoverfabrics.com

Buzzin' Around KIM SCHAEFER



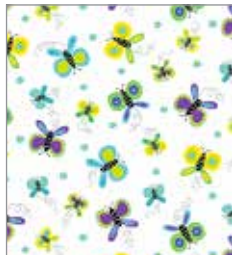
9380-K



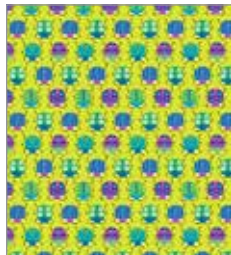
9380-L 1 panel (2/3 yd)



9381-O Fat 1/8 yd



9381-T 3/4 yd



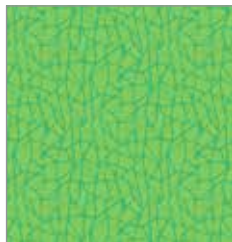
9383-G Fat 1/8 yd



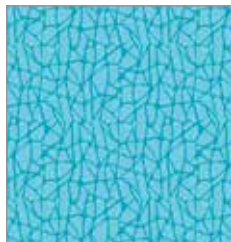
9383-Y 1/2 yd



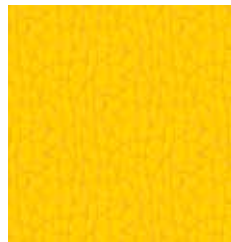
9382-E Fat 1/8 yd



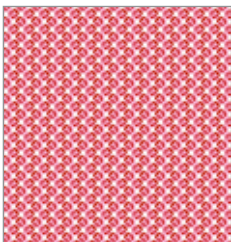
9382-G Fat 1/8 yd



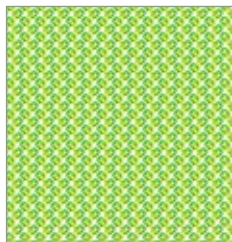
9382-T Fat 1/8 yd



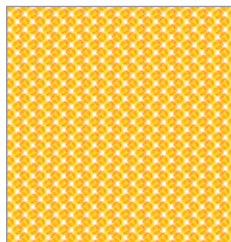
9382-Y Fat 1/8 yd



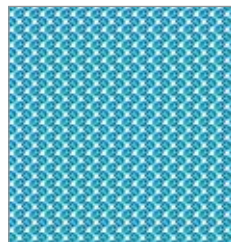
9385-E Fat 1/8 yd



9385-G Fat 1/8 yd



9385-O Fat 1/8 yd
(extra yds needed for backing)



9385-T Fat 1/8 yd

FABRIC	5 KITS	10 KITS	20 KITS
FROM EACH	1	1	1
9380-L	9381-O	9381-T	
9382-E	9382-G	9382-T	
9382-Y	9383-G	9383-Y	
9384-K	9384-L	9384-X	
9385-E	9385-G	*9385-O	
9385-T	9386-E	9386-G	
9386-O	9386-T	8537-K	

BACKING

*9385-O	2	3	6
---------	---	---	---

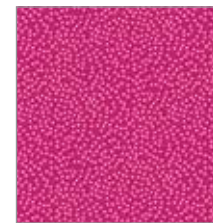
Yardage needed for backing:

4 YDS per kit

Bolts needed to cut project kits.

15 yds = 1 bolt

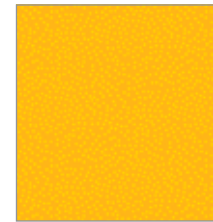
Fabrics shown are 10% of actual size.
Fabrics used in quilt pattern are shown in black.



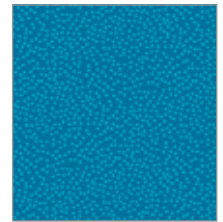
9386-E Fat 1/8 yd



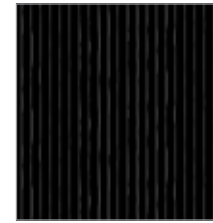
9386-G Fat 1/8 yd



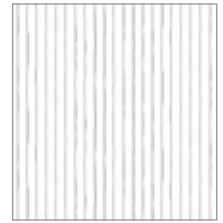
9386-O Fat 1/8 yd



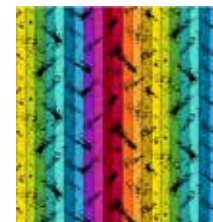
9386-T Fat 1/8 yd



9384-K 3/4 yd



9384-L 3/4 yd



9384-X 3/4 yd



8537-K 5/8 yd
(binding)